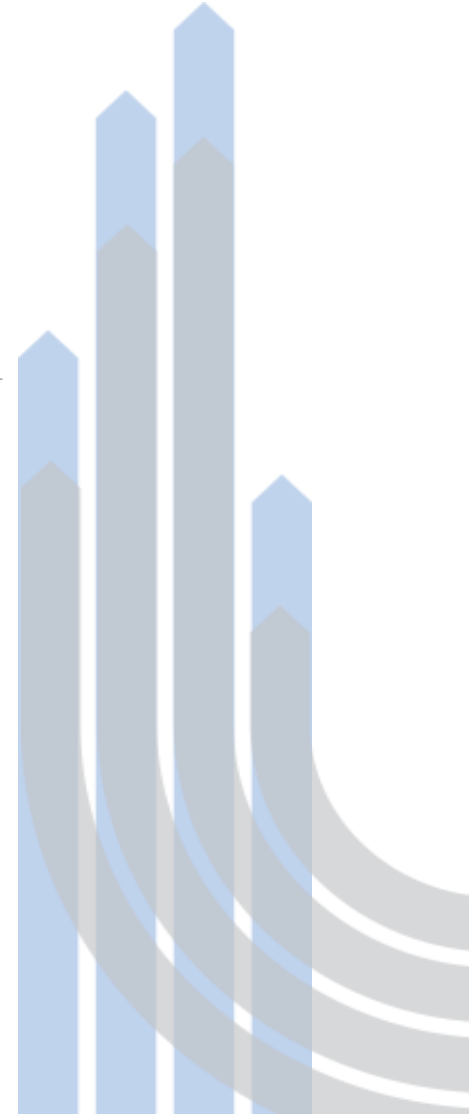


National Manufacturing Competitiveness Levels (NMCL)

Steve Collins, NMCL Automotive Programme Manager



NMCL

What is NMCL?

NMCL is a system developed by an ADS Group Limited (ADS) and Society of Motor Manufacturers & Traders (SMMT) led consortium, supported by industry primes and OEMs.

What is NMCL Automotive ?

- NMCL Automotive is a programme that utilises the NMCL system to support the automotive sector. The programme utilises £16m of Government funding to engage with over 100 companies over three years.
- Current end date is 31 March 2022 but an extension has been requested out to 2024
- The funding can be used to support improvement activities in the automotive supply chain through training, coaching, mentoring and consultancy.

NMCL Automotive

Who is Eligible for This Funding?

Manufacturers of one or more of the following products:

Vehicles. Cars, heavy, medium and light commercial vehicles, buses and coaches, road tractors, trailers and semi-trailers, battery electric vehicles, agricultural and industrial tractors and off highway vehicles, motorised and trailer caravans, motorbikes.

Components. All parts, tyres and engines used in the manufacture of the vehicles above.

Accessories. Equipment, bodywork and materials for the purpose of being fixed to, or used in the vehicles above.

Automotive Software. Any software, (or firmware or embedded software), related to automotive industry specific products or services.

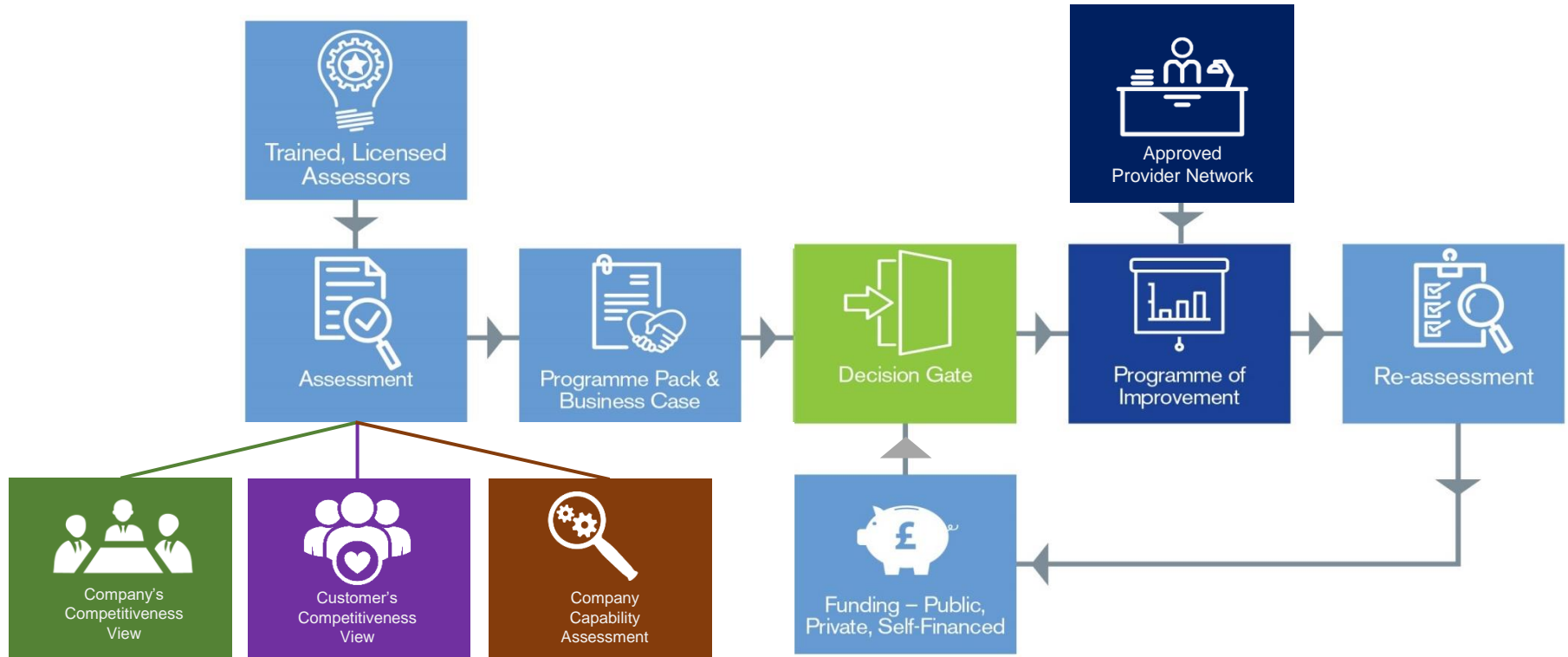
Production Equipment. Equipment designed to enable the manufacture of automotive products.

NMCL Automotive

Who Is Eligible For This Funding?

- You must be located in the UK and undertake all of the NMCL related training in the UK.
- The NMCL Automotive Programme is open to suppliers of all sizes however priority will be given to small & medium sized enterprises (SME). Therefore:
 - 80% of beneficiaries will be small and medium size enterprises (businesses with less than 250 employees and a turnover of less than €50 million).
 - Subsidiaries or wholly owned enterprises of larger groups are eligible if they meet the SME criteria.
 - 20% of the beneficiaries may be larger companies.

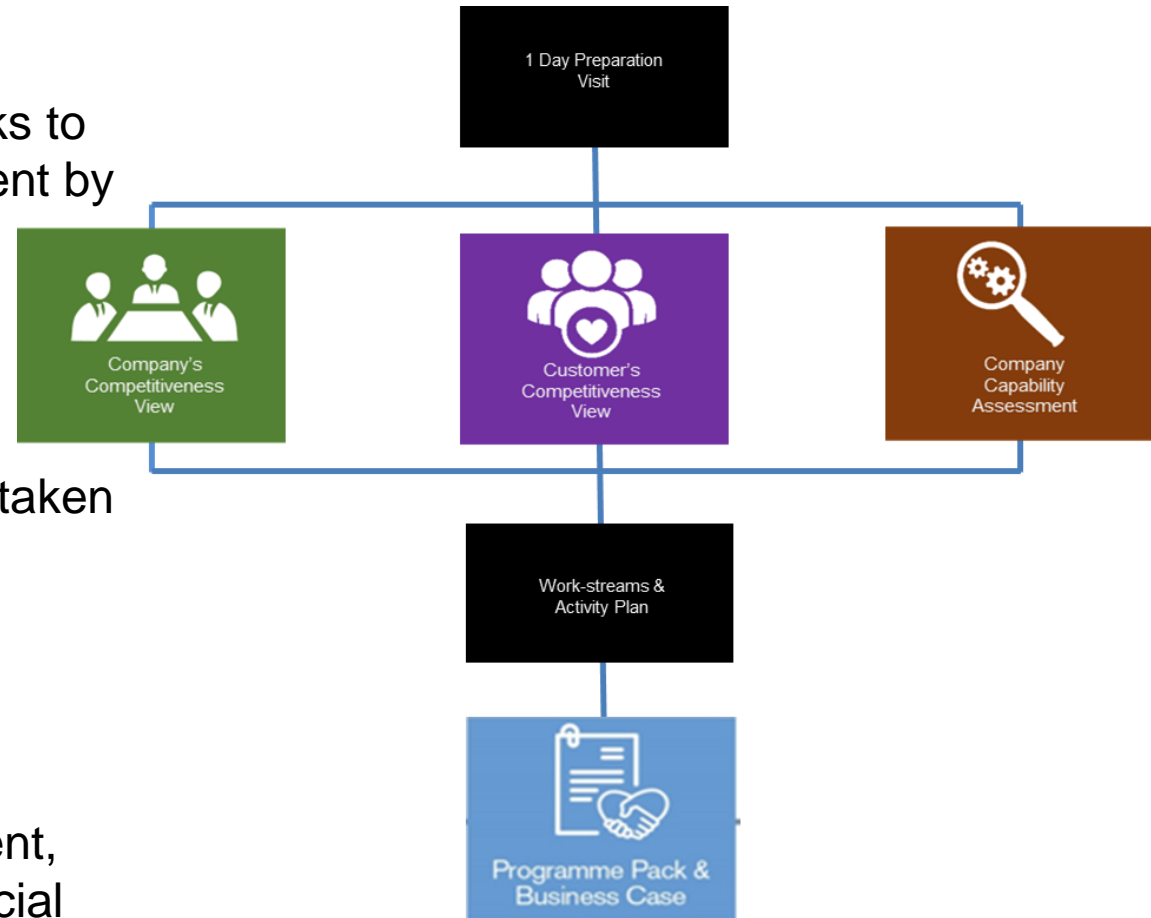
The NMCL Process



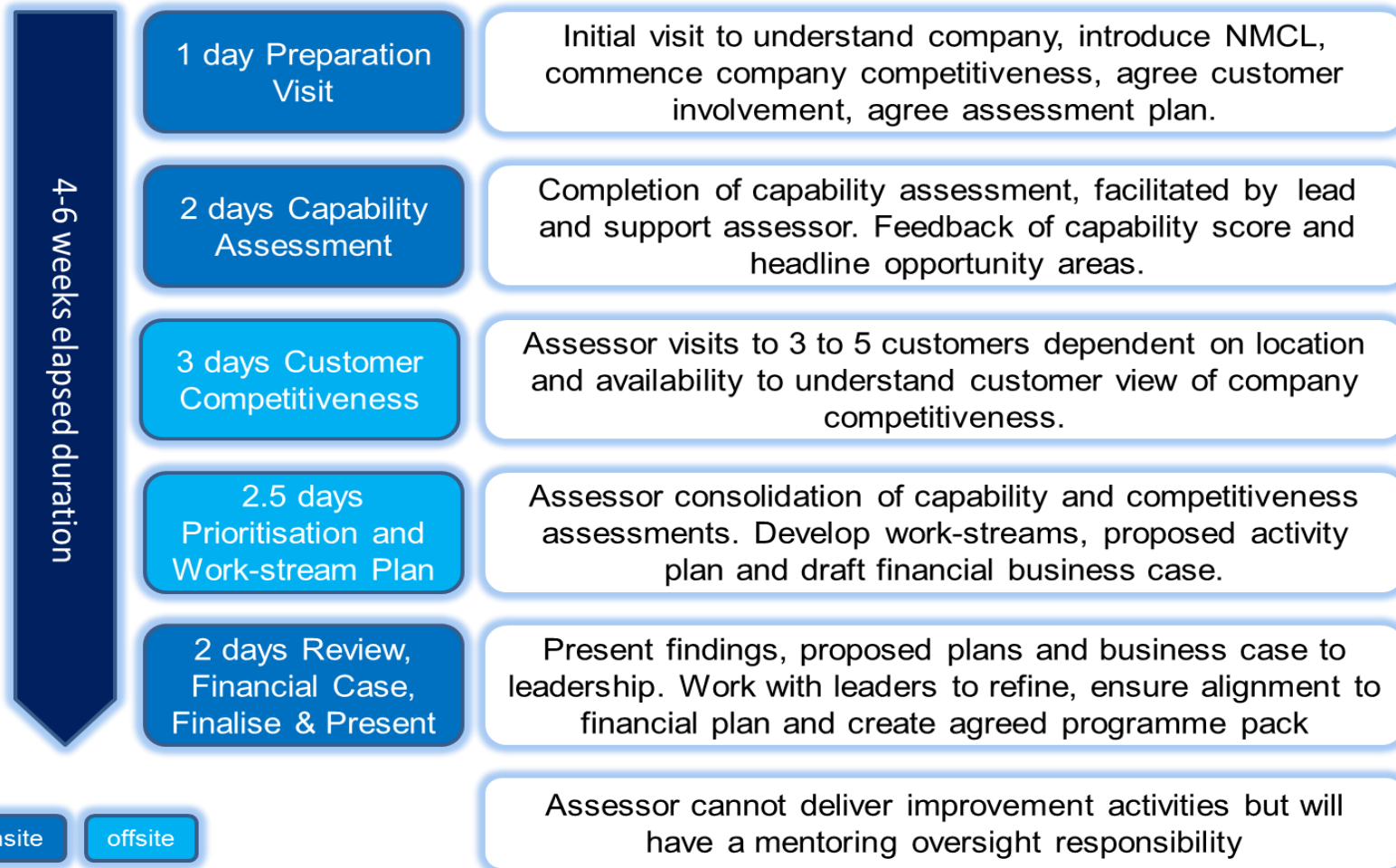
Current Funding Range
£50,000 - £500,000

Assessment

- The overall NMCL Assessment looks to identify priority areas for development by combining information from:
 - The company's own view of its competitiveness.
 - The views of 3-5 customers.
 - A capability Assessment undertaken by an assessment team.
- A detailed improvement plan is developed in conjunction with the Manufacturer's Leadership team identifying key areas for development, likely costs, financial and non-financial performance benefits, impact on key financial ratios.



The Assessment Schedule

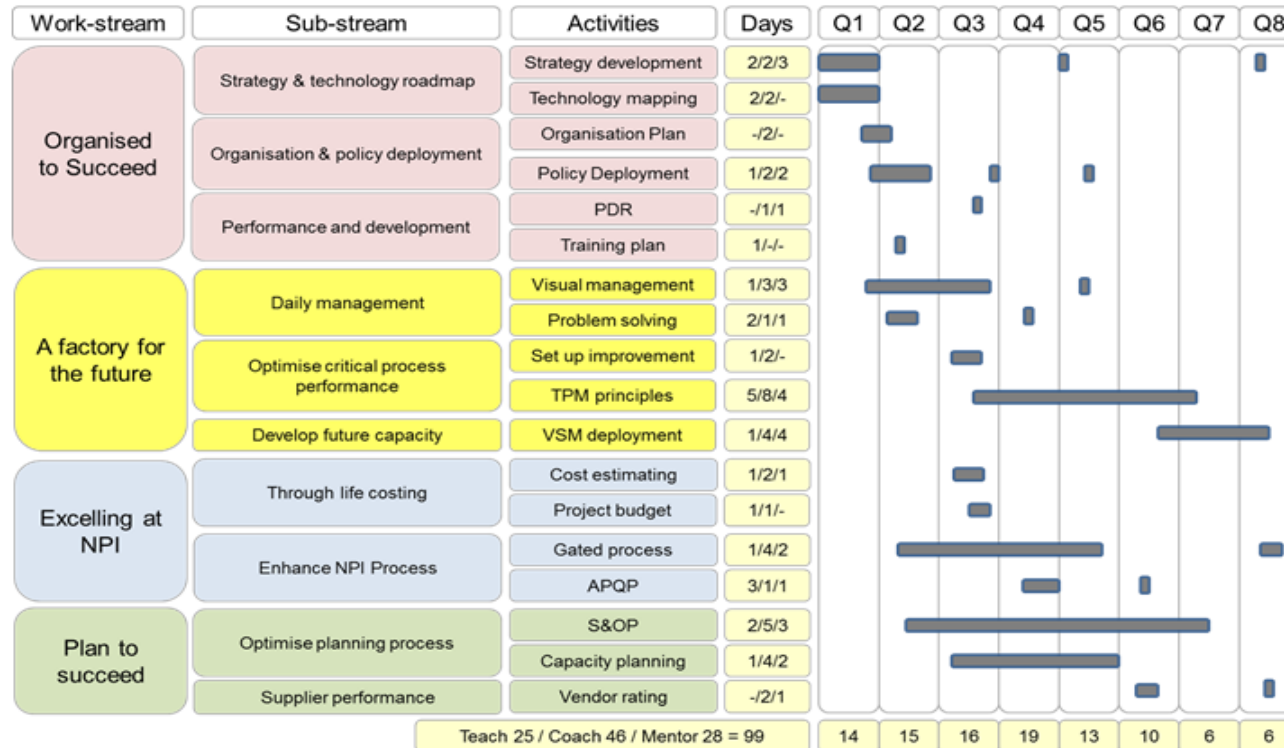


onsite

offsite

© Copyright, SMMT, 2017, All rights reserved

Identifying Work-streams



The competitiveness views and capability gaps are used to identify work-streams, activities and improvement modules blending teaching, coaching and mentoring support. Timing and intensity is scoped to ensure the company can adequately resource activity and gain full value from every activity day.

How It Works

- **Defrayed Cost Scheme** You do the activity, pay the improvement provider, then claim
- **Beneficiary Contribution** Your contribution is in people's time
- **You need to keep records** You keep detailed records of people's activity
 - Interaction with trainer/coach/mentor
 - Travelling time plus T&S
 - Homework
- **People's Time** Salary/National Insurance/Other
- **Claims** Up to monthly through SMMT
- **Cash Flow** In your bank circa 7 days after a claim

Programme of Improvement

- A syllabus of 122 Improvement Modules has been agreed by a broad panel of industry experts.
- Training, coaching, mentoring and consultancy is provided to the beneficiary from a group of approved Improvement Providers.
- The Beneficiary can choose who they want to support them from a list of approved Improvement Providers.

Know Your Customer, Financial Due Diligence, State Aid Guidelines

- There is a need to complete Know Your Customer activities to satisfy the anti money laundering regulations.
- Financial Due Diligence will check that the Beneficiary is solvent and can 'cash flow' any potential activities
- State Aid has more of an impact on large companies
- There is an agreement between SMMT and the Beneficiary

What Happens Next?

- Express an interest on the NMCL website

<https://www.nmcl.co.uk/about/call-for-expressions-of-interest-automotive/>

- Or contact Steve directly

scollins@smmt.co.uk

Thank You

The Society of Motor Manufacturers and Traders Limited

71 Great Peter Street, London SW1P 2BN

www.smmt.co.uk

SMMT, the 'S' symbol and the 'Driving the motor industry' brandline are registered trademarks of SMMT Ltd.

